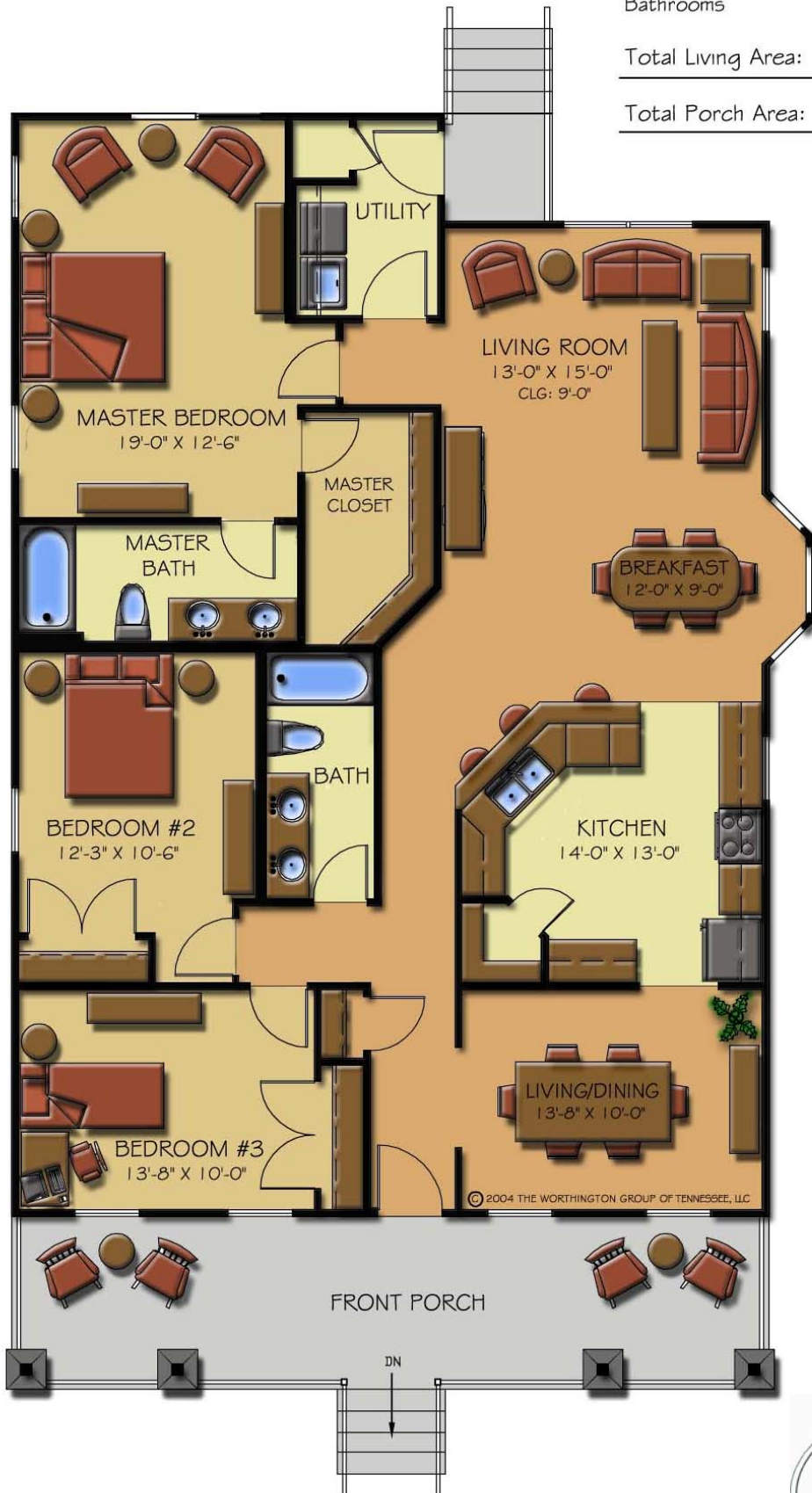


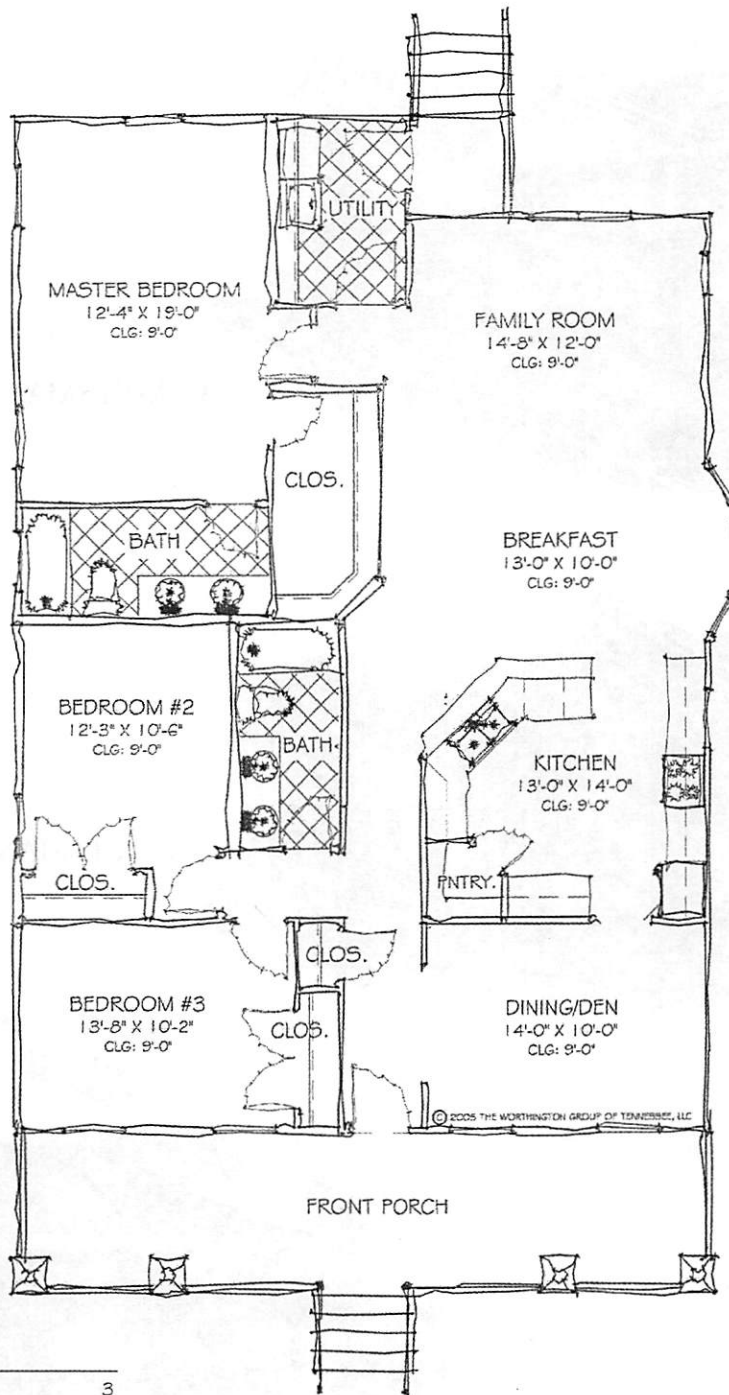
# ASTON II

Bedrooms 3  
Bathrooms 2

Total Living Area: 1,710 sq. ft.

Total Porch Area: 280 sq. ft.





**ASTON #2**

Bedrooms	3
Bathrooms	2

**Living Area**

Total Living Area: 1,720 sq. ft.

Total Porch Area: 310 sq. ft.

All renderings and floorplans are artists' concepts and all dimensions are approximate. Floorplans, materials, specifications and features may be modified without prior notice or obligation. Exterior trim detailing may be offered as an upgrade. Review blueprints with your builder. © Copyright 2004 The Worthington Group of Tennessee, LLC. All rights reserved.

CLASSIC HOME

ASTON II/CRAFTSMAN/VICTORIAN

3 Bedroom, 2 Bath, 2 Car Garage

THE WORTHINGTON GROUP OF TN, LLC



0206



CRAFTSMAN "A"



CRAFTSMAN "B"



VICTORIAN

WILLOW CREEK

745 NEW HIGHWAY 68 • SWEETWATER, TENNESSEE 37874

423-337-0582 • FAX: 423-337-0583

[WWW.WILLOWCREEKTN.COM](http://WWW.WILLOWCREEKTN.COM)